



WINDSOR II

The Windsor II is ideal for large parking lots. When used in conjunction with the Victoria and the smaller Windsor you can maintain the same look throughout a large complex. The Windsor II is available with the lamp in either the horizontal position or vertical position. The optics for the Windsor are segmented, multifaceted.

HOUSING Extruded aluminum min. 0.080" (2 mm) Max 0.410" (10 mm) using precision clamp joint construction. Housing has a power coat paint finish.

REFLECTOR Optics are segmented, multifaceted and rotatable. The Windsor has the following distributions Type III and IV with the lamp in the horizontal position and type V with the lamp in the vertical position using the bubble glass option. Type III and IV are dark sky friendly.

BALLAST All ballasts are Tri-Tap 120,277,347 volts. For 208 and 240 CWI options please consult factory. Available wattages for High Pressure Sodium are 1000. For standard Metal Halide the wattages are 1000. For Pulse Start Metal Halide 750 and 1000.

LAMP All units come with lamp shipped separately.

SOCKET Mogul base 4KV pulse-rated socket with a nickel-plated screw shell and a spring-loaded centre contact.



MOUNTING

POLE MOUNT Extruded aluminum arm available in 4", 6" and 12" lengths.

POST TOP MOUNT Slip fits a 2-7/8" tenon.

LENS FRAME Made of extruded aluminum and is self-hinged that opens to 120 degrees. The Lens frame is opened using a single handed tool-less access. For types III and V the lens is flat tempered clear glass, for Type V glass lens is a tempered clear bubble glass. The glass and frame have a neoprene gasket.

FINISH Powder coat paint finish. Standard colours are black bronze and white. Custom colours are available.

OPTIONS House side shield, photocell, modular disconnect, and fusing. **PROUDLY Made In Canada**

www.rabdesign.ca

Catalog Code

WIN-II

1000HPS 1000MH
750MHP 1000MHP

LAMP

120 277 347 208CWI 240CWI

VOLTAGE

LG - CLEAR GLASS
FG - FROSTED GLASS
BG - BUBBLE GLASS

LENS

R3 - TYPE III, R4 - FORWARD THROW
R5S - TYPE V SQUARE
R5 - VERTICAL LAMP TYPE V

REFLECTOR

PM - POLE MOUNT
YM - YOKE MOUNT

MOUNTING

ASA4 - 4" MOUNTING ARM
ASA6 - 6" MOUNTING ARM
ASA12 - 12" MOUNTING ARM

ARM

BLK - BLACK WH - WHITE
BRZ - BRONZE CC - CUSTOM
COLOUR

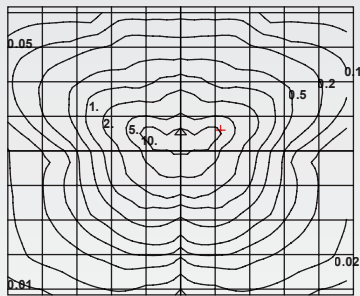
FINISH

PC - PHOTOCELL
F - FUSE

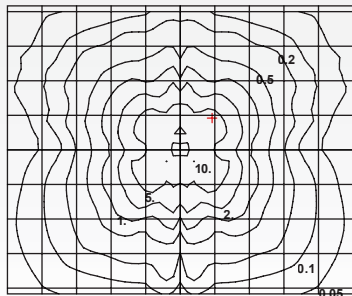
MD - MODULAR DISCONNECT
HSS - HOUSE SIDE SHIELD

OPTIONS

WIN-II TYPE III 1000MH



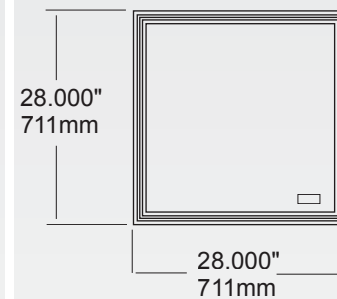
WIN-II TYPE V 1000MH



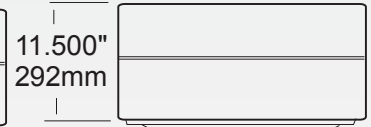
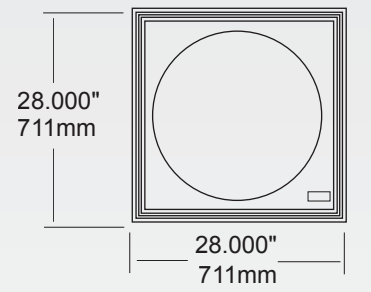
Mounting Height	Multiplier
10	9.000
15	4.000
20	2.250
25	1.440
30	1.000
35	0.735
40	0.563
45	0.444
50	0.360

Dimensions

Horizontal Lamp

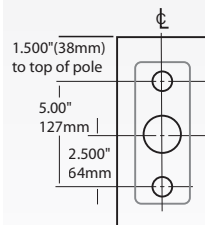


Vertical Lamp

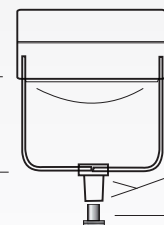


3.000"
76mm

Pole Mount



Yoke Mount

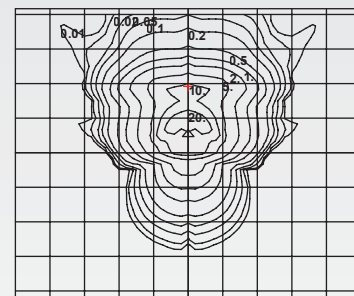


Stainless steel set screws.

Effective Projected Area

1 Fixture	3.16
2 Fixture	6.31
3 Fixture	7.88
4 Fixture	7.88

WIN-II TYPE IV 1000MH



WIN-II TYPE V VERTICAL LAMP 10000MH

