



WL-G WALL LIGHT WITH GLASS LENS

Ideal for mounting above entry ways, loading docks and building perimeters. Housing and mounting plate are made of cast aluminum.

HOUSING Die-cast aluminum with 1/2" bottom conduit knockout entry and box mounting template on back plate.

REFLECTOR Die formed anodized stippled aluminum.

LENS The lens is a prismatic borosilicate glass, sealed with a continuous rubber gasket around the glass and frame

BALLAST Ballasts are available in the following format for 50 and 70 High Pressure Sodium and can be a dedicated 120 volts in Normal and High Power Factor or as a Tri-Tap. For Metal Halide, 50 and 70 as Tri-Tap.

LAMP All units come complete with lamp.

FINISH All units have a powder coat paint finish. Standard colours are bronze and white. For custom colours please consult factory.



SOCKET Medium base 4KV pulse-rated socket with a nickel-plated screw shell and a spring-loaded centre contact.

OPTIONS Photocell and wireguard.

Catalog Code

WL-G

50HPS 70HPS
50MH 70MH

LAMP

120NPF 120HPF 120 277 347

VOLTAGE

BRZ - BRONZE
WH - WHITE
CC - CUSTOM COLOUR

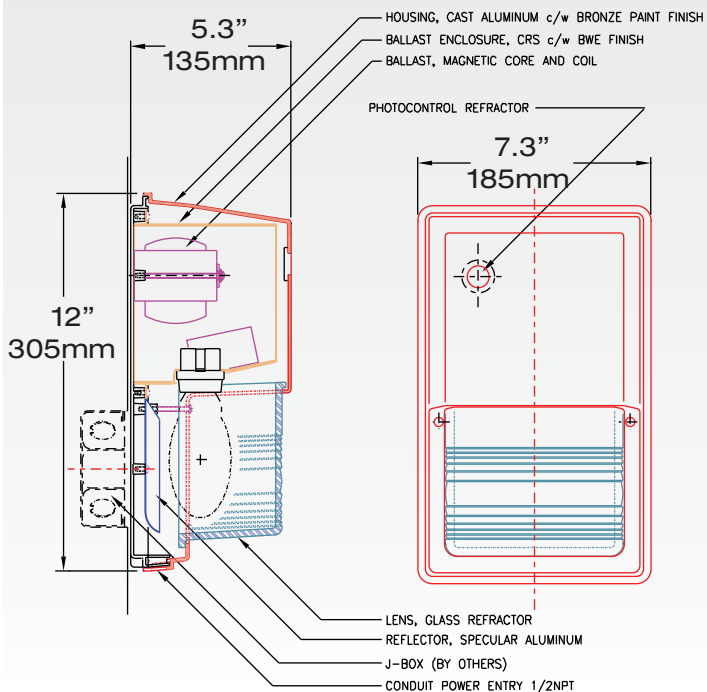
FINISH

PC - PHOTOCELL
WG - WIREGUARD

OPTIONS

Dimensions

RAB
DESIGN



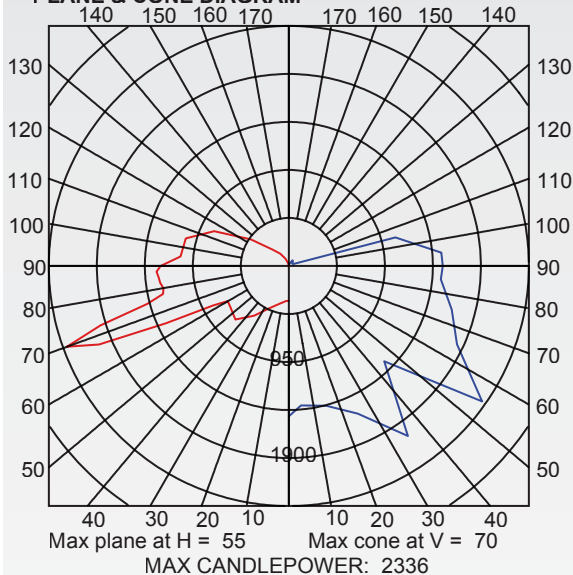
CATALOG NUMBER: WL-G

[MANUFAC] RAB DESIGN
[LUMCAT] WL-G
[LUMINAIRE] 7-1/4" X 1" X 5-5/16" WALL MOUNT LUMINAIRE.
[MORE] SEMI-SPECULAR REFLECTOR.
[MORE] BOROSILICATE GLASS.
[BALLASTCAT] ADVANCE M90 71A5380
[BALLAST] 120V 60Hz MAGNETIC.
[LAMPPOSITION] 0,0
[LAMPCAT] PHILIPS MH70/U/M/4K/ALTO
[LAMPLUM] 5600
[INPUT] 120VAC, 132.7W

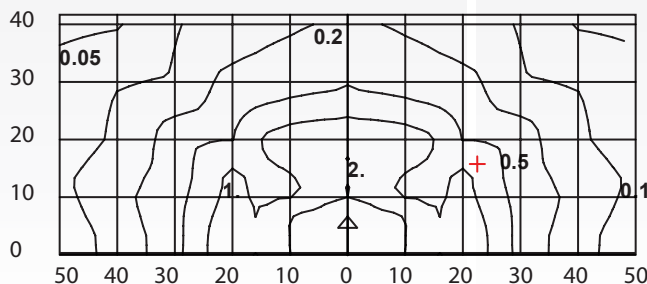
SUMMARY DATA

EFFICIENCY (Total): 104.0 %
EFFICIENCY (Down / Up): 66.1 % / 37.9 %
EFFICIENCY (Street / House): 87.0 % / 16.9 %
LUMENS/LAMP: 5600
NO. OF LAMPS: 1
LUMINOUS OPENING: RECTANGULAR
Width: 0.48 (Feet)
Length: 0.27
Height: 0.47
INPUT WATTS: 132.7

PLANE & CONE DIAGRAM



ISO-ILLUMINANCE DIAGRAM (fc)



Mounting Height	Multiplier
10	1.000
15	0.444
20	0.250
25	0.160
30	0.111
35	0.082
40	0.063
45	0.049
50	0.040

+ = Point of max candela

Mounting Height = 10 Feet. Each box represents one mounting height.

1208

www.rabdesign.ca