



WPD FULL CUTOFF WALL MOUNT

Ideal for mounting above entry ways, loading docks and building perimeters where light trespass is a concern.

HOUSING Die-cast aluminum with 1/2" NPS tapped holes located on the top and both sides of the fixture and mounting option on the back. Side hinged lens frame for ease of relamping.

REFLECTOR Specular anodized aluminum, removable for installation. Symmetrical light pattern maximizes distance between fixtures.

LENS The lens is a clear tempered glass with a continuous silicone rubber gasket.

BALLAST For High Pressure Sodium ballasts are available as 120 volts normal and high power factor and Tri-Tap 120-277-347 for the following wattages, 50, 70, 100 and 150. For Metal Halide all ballasts are Tri-Tap 120-277-347 for 50, 70, 100, 150 and 175 watts. For compact fluorescent lamps all ballasts are electronic 120-277-347 volts for the 26, 32 and 42 watt lamp.

LAMP All units come complete with lamp.

FINISH All units have a Powder coat paint finish. Standard colours are Bronze and White. For custom colours please consult factory.



SOCKET Medium or Mogul base 4KV pulse-rated socket with a nickle-plated screw shell and a spring-loaded centre contact.

OPTIONS Photocell, Tamper Proof Hardware, Single and double fusing.

Catalog Code

WPD

50HPS 70HPS 100HPS 150HPS
50MH 70MH 100MH 150MH
175MH 26CFL 32CFL 42CFL

LAMP

120NPF 120HPF 120 277 347

VOLTAGE

BRZ - BRONZE

WH - WHITE

FINISH

CC - CUSTOM COLOUR

PC - PHOTOCELL

TP - TAMPER PROOF

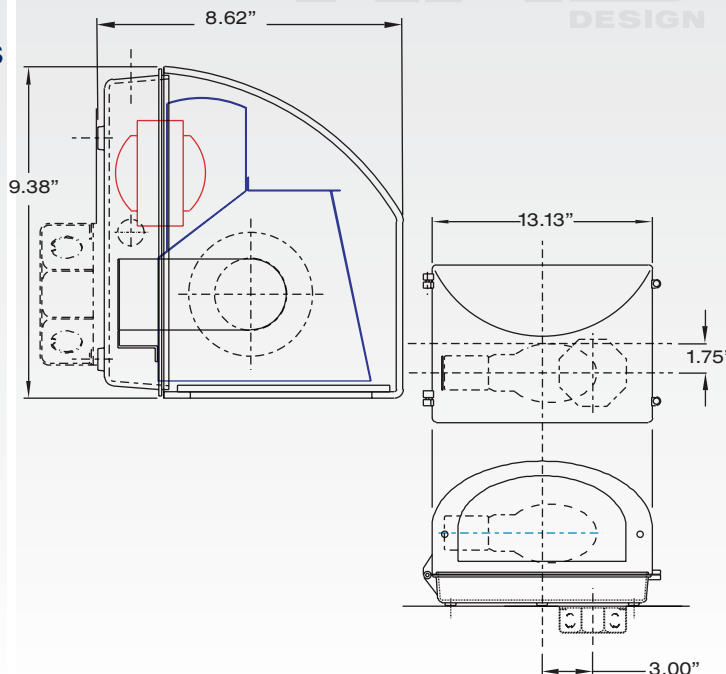
HARDWARE

SF - SINGLE FUSE

DF - DOUBLE FUSE

OPTIONS

Dimensions

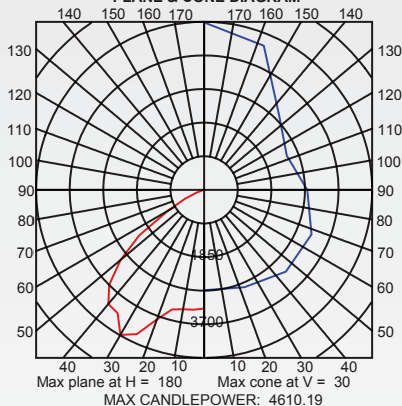


CATALOG NUMBER: WPD150HPS
[MANUFAC] RAB DESIGN
[LUMINAIRE] RAB DESIGN WPD150HPS
[LUMCAT] WPD150HPS
[LAMP] 150W HPS

SUMMARY DATA

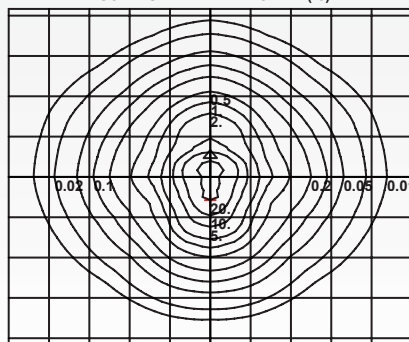
EFFICIENCY (Total): 48.0 %
EFFICIENCY (Down / Up): 48.0 % / 0.0 %
EFFICIENCY (Street / House): 22.9 % / 25.1 %
LUMENS/LAMP: 16000
NO. OF LAMPS: 1
LUMINOUS OPENING: RECTANGULAR

PLANE & CONE DIAGRAM



MAX CANDLEPOWER: 4610.19

ISO-ILLUMINANCE DIAGRAM (fc)



Mounting Height	Multiplier
10	1.440
15	0.640
20	0.360
25	0.230
30	0.160
35	0.118
40	0.090
45	0.071
50	0.058

+ = Point of max candela

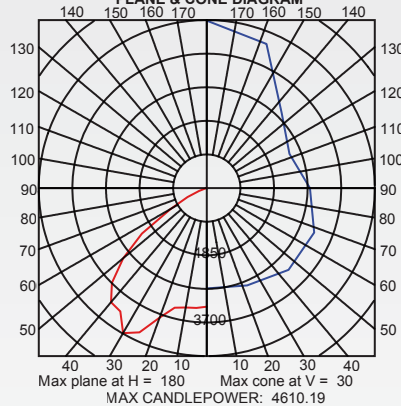
Mounting Height = 12 Feet. Each box represents one mounting height.

CATALOG NUMBER: WPD175MH
[MANUFAC] RAB DESIGN
[LUMINAIRE] RAB DESIGN WPD175MH
[LUMCAT] WPD175MH
[LAMP] 175W MH

SUMMARY DATA

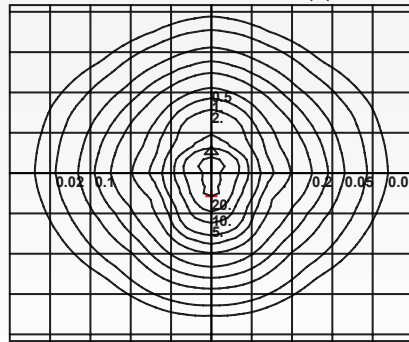
EFFICIENCY (Total): 54.9 %
EFFICIENCY (Down / Up): 54.9 % / 0.0 %
EFFICIENCY (Street / House): 26.2 % / 28.7 %
LUMENS/LAMP: 14000
NO. OF LAMPS: 1
LUMINOUS OPENING: RECTANGULAR

PLANE & CONE DIAGRAM



MAX CANDLEPOWER: 4610.19

ISO-ILLUMINANCE DIAGRAM (fc)



Mounting Height	Multiplier
10	1.440
15	0.640
20	0.360
25	0.230
30	0.160
35	0.118
40	0.090
45	0.071
50	0.058

+ = Point of max candela

Mounting Height = 12 Feet. Each box represents one mounting height.