

The WRUD8 is an architectural, specification grade up-down light with advanced optics available in three sizes and custom colour finishes.



### APPLICATIONS

**Ideal for perimeter lighting in Retail buildings, Atriums, Condominiums and other architectural properties.**

<b>Project</b>	
<b>Type</b>	
<b>Date</b>	
<b>Notes</b>	

### SPECIFICATIONS

#### Construction

WRUD8 has an extruded aluminum housing with a powder coat paint finish. The fixture has a clear tempered glass lens which is held in place with a gasket and three stainless steel screws making it approved for wet locations.

#### Mounting

The fixture can be mounted directly on to the wall and has an easy mounting system. The galvanized steel plate is attached to the wall with 4 screws. The fixture then slides under the two pins and is secured by the two set screws at the bottom.

#### Optics

The fixture has a standard colour temperature of 5000K. 4000K and 3000K are available as options. The fixture also has optional diffusion lenses for narrow, medium or wide beams.

#### Electrical

The standard unit has a high efficiency driver that operates at 120-277V. 347V is optional.

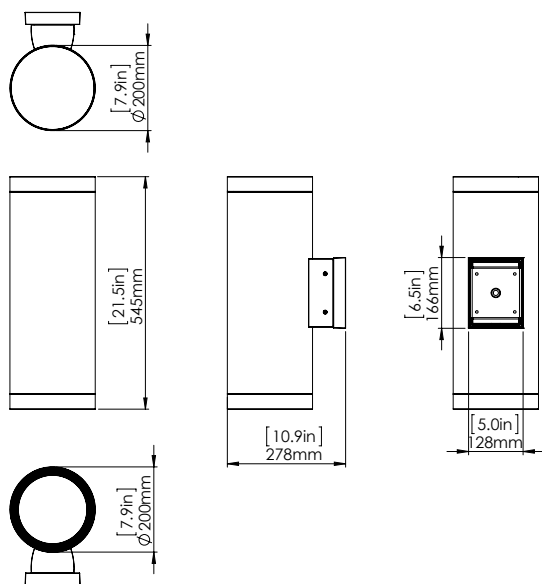
#### Finish

Custom colours available.

<b>Diameter</b>	<b>8"</b>
<b>Watts</b>	<b>58W</b>
<b>Lumens</b>	<b>2346</b>
<b>Efficiency</b>	<b>41 lumens/watt</b>

<b>Operating Temp</b>	<b>-40°C to +40°C</b>
<b>LED Life</b>	<b>100,000 hours</b>
<b>Colour Temp.</b>	<b>5000K (standard), 4000K, 3000K (option)</b>
<b>Warranty</b>	<b>5 Years</b>
<b>Certification</b>	<b>Approved to uL/CSA standards</b>

### DIMENSIONS



Diffusion lens

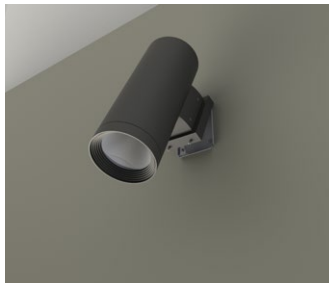


## EASY INSTALLATION

Step 1: Attach steel plate on the wall with 4 screws



Step 2: Slide fixture under the two pins till it locks in



Step 3: Secure with 2 set screws on the bottom



## ORDERING GUIDE

<b>WRUD8</b>	-	<b>LED</b>	-		-		-	
--------------	---	------------	---	--	---	--	---	--

\* Standard configuration